



# SUSTAINABLE GROUNDWATER MANAGEMENT ACT

## Public Information

December 2016

### Important Note

SGMA has the potential to impact all well owners in the portion of western Calaveras County overlying the groundwater basin. However, “de minimis” users, or those who use 2 acre-feet or fewer for domestic purposes, would be exempted from any potential metering and reporting requirements in the future. The owners of wells drilled in fractured bedrock, or outside of the planning area, will not be impacted by SGMA.

### Next Steps:

- On December 14, 2016, CCWD will hold a public hearing on election to become a GSA. Other partners will also need to hold hearings.
- All partners must sign a memorandum of understanding (MOU)
- GSA formation must be finalized by June 30, 2017.
- The GSA must develop a groundwater sustainability plan (GSP) by 2020.

### Contact

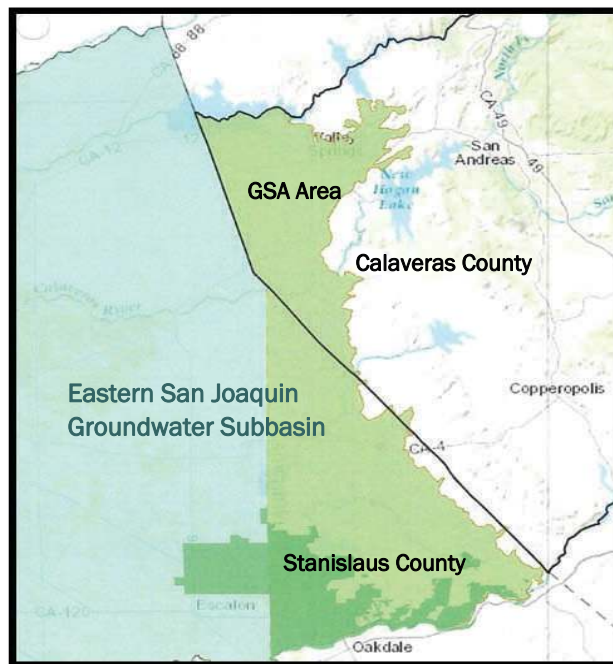
Joel Metzger, Public Information Officer

Phone: (209) 754-3123

JoelM@ccwd.org

## OVERVIEW OF THE SUSTAINABLE GROUNDWATER MANAGEMENT ACT (SGMA)

After many years of unsustainable groundwater pumping practices throughout much of California, the state Legislature passed SGMA in 2015, which tasked local agencies with managing their groundwater resources in a sustainable manner. Because the western portion of Calaveras County overlies about 70 square miles of the Eastern San Joaquin Groundwater Subbasin, which has been critically over drafted since 1980, CCWD is moving forward with the formation of a Groundwater Sustainability Agency to contribute to recharging the basin and to maintain local control of our groundwater basin. The District is well-positioned for this task since it has been monitoring



groundwater for the past decade and has a recognized groundwater management plan in place. In the event that a local agency does not take on the

formal role of a recognized Groundwater Sustainability Agency (GSA) by June 30, 2017, the state would intervene in the management of our local groundwater resources.

## GROUNDWATER SUSTAINABILITY AGENCY (GSA)

The District is partnering with Stanislaus County to form a cooperative GSA that will cover the areas of the Eastern San Joaquin Subbasin within Calaveras and Stanislaus Counties, not within another GSA boundary. In time, the District also hopes to partner with other counties and agencies. This GSA will benefit all partners because it will allow for cost sharing, grant opportunities, regional groundwater sustainability, opportunities to leverage technical expertise and includes close cooperation between upstream and downstream agencies.

### Additional Resources:

Learn more at: <http://ccwd.org/ccwds-role-sustainable-groundwater-management-act/>

Department of Water Resources: <http://www.water.ca.gov/groundwater/sgm/>