

# CCWD FIELD OPERATIONS

**December 2022 Department Report**

**January 11th, 2023**



## **2-INCH WATER MAIN BREAK – HWY 26**



## 2-INCH WATER MAIN BREAK – HWY 26



## SERVICE LINE REPAIR - PARDINI



## **SERVICE LINE REPAIR - PARDINI**



## SERVICE LINE REPAIR - BUTLER

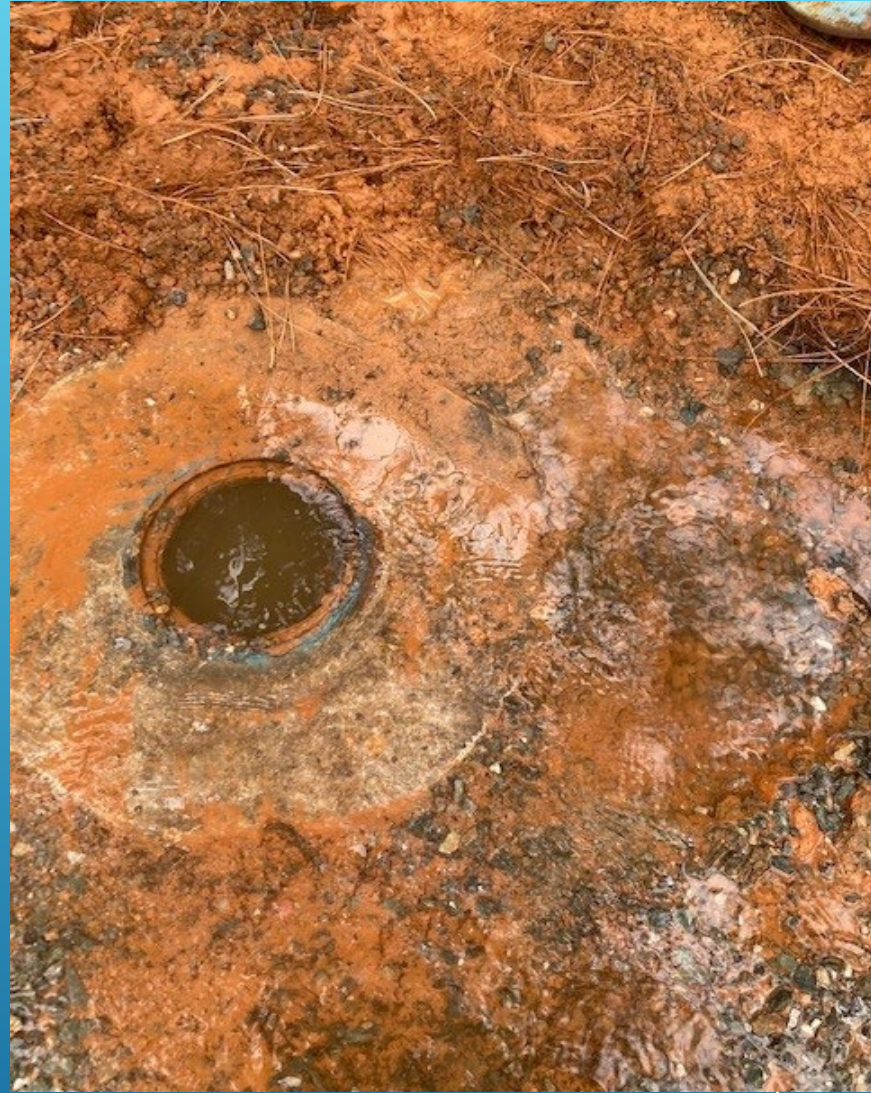


## 4-INCH MAIN REPAIR – WEST POINT



## 4-INCH MAIN REPAIR – WEST POINT





## WEST POINT WTP – 2-INCH REPAIR



## WEST POINT WTP – 2-INCH REPAIR

10  
1/24/2023



# WEST POINT WTP – 2-INCH REPAIR



**NAVAJO – SERVICE LINE REPAIR AND ATT LINE  
DAMAGE**



# NAVAJO – SERVICE LINE REPAIR AND ATT LINE DAMAGE



# NAVAJO – SERVICE LINE REPAIR AND ATT LINE DAMAGE



# WALLACE WW PUMP REPAIR



# VAC TRUCK DRIVE LINE FAILURE





# CORP YARD ELECTRICAL PANEL DELIVERY AND BACKFLOW REPAIR



# COPPER COVE LIFT STATION 18 GENERATOR TROUBLESHOOT



# SWITCHGEAR AND GENERATOR PADS – CORP YARD



# FLOW METER VERIFICATIONS



# FLOW METER VERIFICATIONS



# CC RECLAIM PLANT EXPORT VALVE TROUBLESHOOT



**THANK YOU**

23

1/24/2023